



Flight Plan & Site Survey

Created using **RPAS Wilco®**

Operation Name:

Mission 02-13-2023

Pilot Name:

[REDACTED]

Pilot Certificate:

[REDACTED]

Flight Start:

February 13, 2023 1:26 PM

Flight End:

February 13, 2023 3:26 PM

Flight Area (Latitude):

50° 23' 21.20" N (50.389)

Flight Area (Longitude):

105° 35' 6.70" W (-105.585)

Altitude - Radius:

Alt: 700 ft - Rad: 926.0 m (0.5 nm)

Airspace:

CONTROLLED

FIR - Contact:

CZWG - 204-983-8338

Weather:

1.6 Celsius - Partially cloudy

Please ensure you received all required authorizations prior to flight.

Disclaimer

This Site Survey was created using RPAS Wilco by AIM Robotics. The flight plan contained is intended only for RPAS flights on the date/time and location specified. The user accepts all responsibility for the accuracy and completeness of the information contained.

For the complete Terms & Conditions, see

<https://rpaswilco.com/#/tnc>

Included

Site Survey

Obstacles (if available)

Nearby Aerodromes

Canadian Aviation Regulations

GFA

Aerodrome Supplements

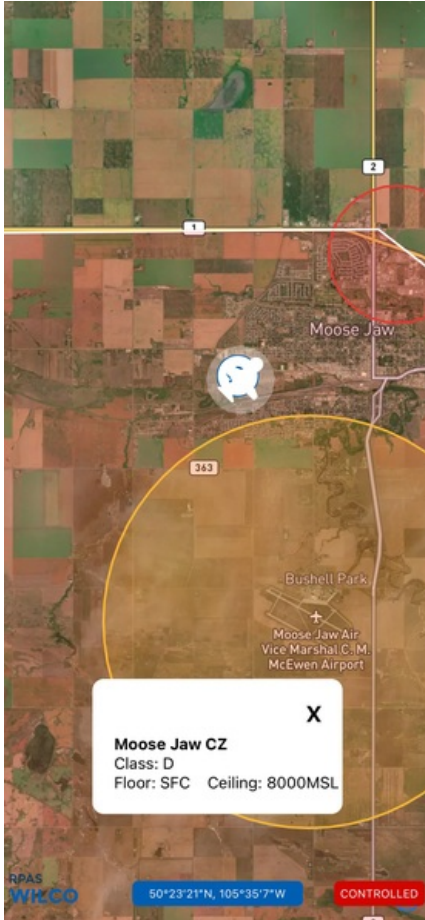
METAR & TAF (if available)

NOTAMs



CFS



Flight Map



MAP Details

	Latitude	Longitude
 MODEL	50° 23' 21.20" N (50.389)	105° 35' 6.70" W (-105.585)
 Pilot	50° 23' 24.80" N (50.3902)	105° 35' 10.30" W (-105.5862)



Airspace Classification



Overlying Airspaces

Class	Name	Floor	Ceiling
B	Regina, SK CAE XPNDR MANDTRY	12500MSL	18000MSL
E	Moose Jaw, SK TCA	700AGL	12500MSL
B	Moose Jaw, SK TCA	12500MSL	18000MSL
D	Moose Jaw CZ	SFC	8000MSL

Nearest Aerodromes & Distance from Operation

AIR VICE MARSHAL C.M. MCEWEN (CYMJ AERODROME DND)	Lat: 50.33	Long: 105.559	6.842 KM	3.69 NM
MOOSE JAW (DR. F. H. WIGMORE REGIONAL HOSP) (CWH6 HELIPORT Cert)	Lat: 50.42	Long: 105.526	5.414 KM	2.92 NM
MOOSE JAW MUNICIPALITY (CJS4 AERODROME Reg)	Lat: 50.434	Long: 105.386	14.968 KM	8.08 NM
SPRING VALLEY (NORTH) (CKP2 AERODROME Reg)	Lat: 50.06	Long: 105.402	38.858 KM	20.98 NM

Weather Information for Mission Day

Summary: Partly cloudy throughout the day.

Condition	Temperature	Feels Like	Precipitation	Visibility	Cloud Coverage	Wind Speed	Humidity
Partially cloudy	1.6 Celsius	3.9 Celsius	1.0 %	16.2 Km	50.1 %	42.4 kph	77.6 %

Canadian Aviation Regulations

Division III — General Operating and Flight Rules

For full listing please visit <https://laws-lois.justice.gc.ca/eng/regulations/SOR-96-433/FullText.html#s-901.27>

Visual Line-of-sight

- **901.11 (1)** Subject to subsection (2) no pilot shall operate a remotely piloted aircraft system unless the pilot or a visual observer has the aircraft in visual line-of-sight at all times during flight.
- **(2)** A pilot may operate a remotely piloted aircraft system without the pilot or a visual observer having the aircraft in visual line-of-sight if the operation is conducted in accordance with a special flight operations certificate — RPAS issued under section 903.03.

Procedures

- **901.23 (1)** No pilot shall operate a remotely piloted aircraft system unless the following procedures are established:
 - **(a)** normal operating procedures, including pre-flight, take-off, launch, approach, landing and recovery procedures; and
 - **(b)** emergency procedures, including with respect to
 - **(i)** a control station failure,
 - **(ii)** an equipment failure,
 - **(iii)** a failure of the remotely piloted aircraft,
 - **(iv)** a loss of the command and control link,
 - **(v)** a fly-away, and
 - **(vi)** flight termination.
- **(2)** If the manufacturer of the remotely piloted aircraft system provides instructions with respect to the topics referred to in paragraphs (1)(a) and (b), the procedures established under subsection (1) shall reflect those instructions.
- **(3)** No pilot shall conduct the take-off or launch of a remotely piloted aircraft unless the procedures referred to in subsection (1) are reviewed before the flight by, and are immediately available to, each crew member.
- **(4)** No pilot shall operate a remotely piloted aircraft system unless the operation is conducted in accordance with the procedures referred to in subsection (1).

Site Survey

901.27 No pilot shall operate a remotely piloted aircraft system unless, before commencing operations, they determine that the site for take-off, launch, landing or recovery is suitable for the proposed operation by conducting a site survey that takes into account the following factors:

- **(a)** the boundaries of the area of operation;
- **(b)** the type of airspace and the applicable regulatory requirements;
- **(c)** the altitudes and routes to be used on the approach to and departure from the area of operation;
- **(d)** the proximity of manned aircraft operations;
- **(e)** the proximity of aerodromes, airports and heliports;
- **(f)** the location and height of obstacles, including wires, masts, buildings, cell phone towers and wind turbines;
- **(g)** the predominant weather and environmental conditions for the area of operation; and
- **(h)** the horizontal distances from persons not involved in the operation.

Operations at or in the Vicinity of an Aerodrome, Airport or Heliport

- **901.47 (1)** No pilot shall operate a remotely piloted aircraft at or near an aerodrome that is listed in the *Canada Flight Supplement* or the *Water Aerodrome Supplement* in a manner that could interfere with an aircraft operating in the established traffic pattern.
- **(2)** Subject to section 901.73 no pilot shall operate a remotely piloted aircraft at a distance of less than
 - **(a)** three nautical miles from the centre of an airport; and
 - **(b)** one nautical mile from the centre of a heliport.
- **(3)** No pilot shall operate a remotely piloted aircraft at a distance of less than three nautical miles from the centre of an aerodrome operated under the authority of the Minister of National Defence unless the operation is conducted in accordance with a special flight operations certificate — RPAS issued under section 903.03.

Records

- **901.48 (1)** Every owner of a remotely piloted aircraft system shall keep the following records:
 - **(a)** a record containing the names of the pilots and other crew members who are involved in each flight and, in respect of the system, the time of each flight or series of flights and
 - **(b)** a record containing the particulars of any mandatory action and any other maintenance action, modification or repair performed on the system, including
 - **(i)** the names of the persons who performed them,
 - **(ii)** the dates they were undertaken,
 - **(iii)** in the case of a modification, the manufacturer, model and a description of the part or equipment installed to modify the system, and
 - **(iv)** if applicable any instructions provided to complete the work.
- **(2)** Every owner of a remotely piloted aircraft system shall ensure that the records referred to in subsection (1) are made available to the Minister on request and are retained for a period of
 - **(a)** in the case of the records referred to in paragraph (1)(a), 12 months after the day on which they are created; and
 - **(b)** in the case of the records referred to in paragraph (1)(b), 24 months after the day on which they are created.
- **(3)** Every owner of a remotely piloted aircraft system who transfers ownership of the system to another person shall, at the time of transfer, also deliver to that person all of the records referred to in paragraph (1)(b).

SASKATCHEWAN

AERODROME/FACILITY DIRECTORY

MOOSE JAW / AIR VICE MARSHAL C.M. McEWEN SK

CYMJ

REF	N50 19 49 W105 33 33 4S 9°E (2022) UTC-6 Elev 1892' A5006 LO2 HI3 HI4 CAP	
OPR	DND Aeronautical Information Services 306-694-2222 Ext 5263 CSN 319-826-5263 All non-NFTC / CYMJ based acft PPR 48 hrs rqrd	
PF	B-1 D-2,3,4,5,6 no pax fac avbl. Nova msg rqrd stating ETA, stop-over duration & no of pax	
CUST	15 Wing acft only call 306-780-6223/6218	
FLT PLN		
FIC	Edmonton 866-WXBRIEF (Toll free within Canada) or 866-541-4102 (Toll free within Canada & USA)	
MIL	CSN 319-826-5263	
WX	Met brief for mil only. CSN 826-5260 ltd hrs. O/T JMC 1-800-WXMETEO (996-3836) or CSN 432-2613. (See COMM). METAR dur flt ops. TAF dur flt ops, issue times depending on mil requirements.	
SERVICES	All tran arr & dep 48 hrs PPR thru 15 Wg AIS 306-694-2222 Ext 5263 CSN 319-826-5263. Mil tran svcg ltd 14-0030Z Mon-Fri (fr Nov 1 to Feb 15 1430-01Z Mon- Fri), 48 hrs PN or no svc avbl. All visiting acft rpt to 15 Wg AIS at 4 hg or ctc 694-2222 Ext 5263, upon arr & prior to dep.	
FUEL	F-34, SP, Avbl 14-0030Z Mon-Fri (fr Nov 1 to Feb 15 1430-01Z Mon-Fri) O/T 48 hrs PN. 128, 133, 148, SOAP	
OIL	CAT 3	
ARFF	LHOX	
SUP FL	CE13, 15, 16, CEA1	
JASU		
RWY DATA	Rwy 11L(109°)/29R(289°) 8320x150 ASPH Rwy 11R(109°)/29L(289°) 7280x150 ASPH Rwy 03(034°)/21(214°) 3460x100 ASPH	
RCR	Opr CRFI 14-0030Z Mon-Fri (fr Nov 1 to Feb 15 1430-01Z Mon-Fri) clsd Sat & Sun. Hrs may vary without ntc. Rwy 11R/29L PCN 62 F/D/X/T. Rwy 11L/29R PCN 139 F/D/X/T. Rwy 03/21 light acft only. Depression aprx 700' to 900' from thld 03, 15' rgt of centreline Rwy 03, aprx 4 inches wide and 1.5 inches deep. Twy F max wt 35000lbs. Ramp W of TWR PCN 62 R/A/X/T. Ramp E of TWR PCN 34 R/A/X/T.	
LIGHTING	03-(T ME), 21-(T ME), 11L-AF SF(TE HI) P2 GPI 979' TCH 51', 29R-AF SF(TE HI) P2 GPI 1033' TCH 54', 11R-(TE HI) P2 GPI 1000' TCH 52', 29L-(TE HI) P2 GPI 1000' TCH 52'	
COMM	Avbl 14-0030Z Mon-Fri (fr Nov 1 to Feb 15 1430-01Z Mon-Fri), A/D frequently clsd Sat & Sun. Opr dates & hrs may vary without notice.	
ATIS	131.3 257.8	
CLNC DEL	135.3 234.4	
GND	121.8 275.8	
TWR	126.2 295.6 310.8 322.6 (E)	
TML	119.0 227.6 342.9 (E)	
ARR	119.0 129.1 134.1x 227.6 289.4x 308.3x 318.8x 374.1x 378.5x 381.3x (E)	
DEP	119.0 227.6 342.9 (E)	
PMSV	344.6 ltd hrs.	

SASKATCHEWAN

AERODROME / FACILITY DIRECTORY

MOOSE JAW / AIR VICE MARSHAL C.M. McEWEN SK (Cont'd)

CYMJ

NAV	
VORTAC	YMJ 113.4 Ch 81 N50 19 52 W105 33 48 (1898') VOR maint 2nd Mon of the month 13-14Z. TACAN maint 3rd Thu of the month 13-15Z.
DME	IBP or IMJ 109.3 Ch 30 N50 19 51 W105 33 48 Maint 2nd Mon of the month 12-14Z
ILS	IMJ 109.3 (Rwy 29R) RVR or IBP 109.3 (Rwy 11L) Maint 2nd Mon of the month 12-14Z
PAR	119.0 227.6 (E) 14-0030Z Mon-Fri (fr Nov 1 to Feb 15 1430-01Z Mon-Fri) clsd Sat & Sun. Hrs may vary without notice. PAR maint 1st Tue of the month 13-16Z. PSR/SSR maint 1st Fri of the month 12-14Z
PRO	A/D clsd to unauthorized acft outside of twr opr hrs 14-0030Z Mon-Fri (fr Nov 1 to Feb 15 1430-01Z Mon-Fri). Acft unable to establish two-way comm with CYMJ ATC are proh fr taxi, tkof or ldg at the A/D exc in an emerg. All RCAF acft requesting enroute apch during twr ops hrs do not require PPR. Apch req appr at the discretion of CYMJ ATS subj to tfc density. All tran acft must ctc CYMJ gnd on 121.8/275.8 prior to engine start. On climb out in VFR wx, all acft to not exceed 2500 ASL until beyond dep end of rwy. Rgt hand circuits Rwy 11R and 29R (CAR 602.96). Tfc Ptn - Convl 3000 ASL, Jet 3500 MSL. CZ may be active outside published hrs. Glider activity wknds & hols within 3 NM of AD max alt 10,000 ASL Paradrop activity to 12,000 ASL within 1.5NM of Moose Jaw Muni.
HELI	Dep & arr Helo 1 & 2 see VTPC. Arriving acft must ctc twr 295.6 or 126.2 prior to entering CZ & req Helo 1 or Helo 2 arr. Intercept inbound track within 10NM. Heli parking positions as directed by ATC (normally west side of control tower).
NOISE	All mil acft shall avoid flying over the city of Moose Jaw below 5000 ft ASL.
CAUTION	Rwy 21 - PSR twr 2010 ASL loc 2034' along & 767' rgt of dep end centreline. Twy Bravo between Rwy 11L & Rwy 11R is restricted to locally based Harvard, Hawks & Tutor acft only. Model flying club, 3.5NM NW of aerodrome YMJ R333 3.5 DME posn (N50 23 18 W105 35 12) max alt 1000 AGL.

MOOSE JAW (DR. F. H. WIGMORE REGIONAL HOSP) SK (Heli)

CWH6

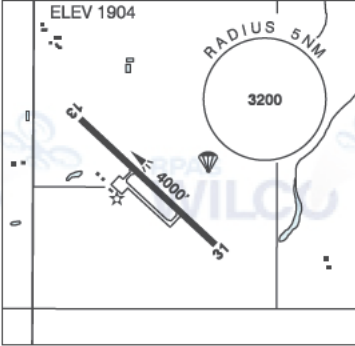
REF	N50 25 12 W105 31 32 Adj N 10°E (2016) UTC-6 Elev 1879' A5006	
OPR	Dr. F.H. Wigmore Regional Hosp 306-694-0275 Cert PPR	
PF	A-1,2,4 C-3,5,6,7,8	
FLT PLN		
FIC	Edmonton 866-WXBRIEF (Toll free within Canada) or 866-541-4102 (Toll free within Canada & USA)	
HELI DATA	FATO/TLOF 86' dia CONC Safety Area 115' dia Max heli overall leng h 57.4'	
RCR	Opr	
LIGHTING	RW (LO) yellow	
COMM		
MF	Moose Jaw (CYMJ) TWR 126.2 ctc within 10NM 4900 ASL	
PRO	Arr/dep curved 064° to 099° fr heli, slope 16% (H2), day/night use. Arr/dep curved 264° to 279° fr heli, slope 16% (H2), day/night use.	
CAUTION	Lgt poles W, N, E of heli, marked with obst lgts. Hosp S of heli marked with lgts.	

SASKATCHEWAN

AERODROME / FACILITY DIRECTORY

MOOSE JAW MUNI SK

CJS4

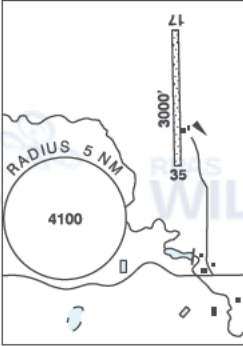
REF	N50 26 01 W105 23 10 7ENE 10°E (2013) UTC-6 Elev 1904' A5006 LO2 CAP	
OPR	Provincial Airways 306-692-7335 (After hrs 306-630-8870) Reg	
PF	D-2,3,4,5,6	
FLT PLN	FIC Edmonton 866-WXBRIEF (Toll free within Canada) or 866-541-4102 (Toll free within Canada & USA)	
SERVICES		
FUEL	100LL, JA-1 (FSII Avbl) Self-serve	
OIL	All	
RWY DATA	Rwy 13(125°)/31(305°)4000x75 ASPH	
RCR	Opr	
LIGHTING	13-(TE LO), 31-(TE LO) ARCAL-122.8 type J	
COMM	ATF UNICOM ltd hrs O/T tfc 122.8 5NM 4900 ASL excluding the CYMJ Class "D" CZ. Apt in close proximity to CFB Moose Jaw Class "D" CZ, for flt info ctc TWR 126.2	
PRO	Rgt hand circuits Rwy 31 (CAR 602.96).	
CAUTION	Ocsl parajump activity within 2NM of A/D daylight hours Apr 1-Nov 15, activated by NOTAM, max alt 12,500 ASL. P-line 2046 ASL 0.4NM SE Thld 31.	

SASKATCHEWAN

AERODROME / FACILITY DIRECTORY

SPRING VALLEY (NORTH) SK

CKP2

REF	N50 03 36 W105 24 07 7N 10°E (2012) UTC-6 Elev 2200' A5006		ELEV 2200
OPR	B. Forman 306-799-4501 Reg		
FLT PLN	FIC Edmonton 866-WXBRIEF (Toll free within Canada) or 866-541-4102 (Toll free within Canada & USA)		
PF	B-1 D-2,3,4,5,6		
RWY DATA	Rwy 17(169°)/35(349°) 3000x50 turf/gravel, centre 20' gravel		
RCR	Opr No win maint		
COMM	ATF tfc 123.2 5NM 5200 ASL		